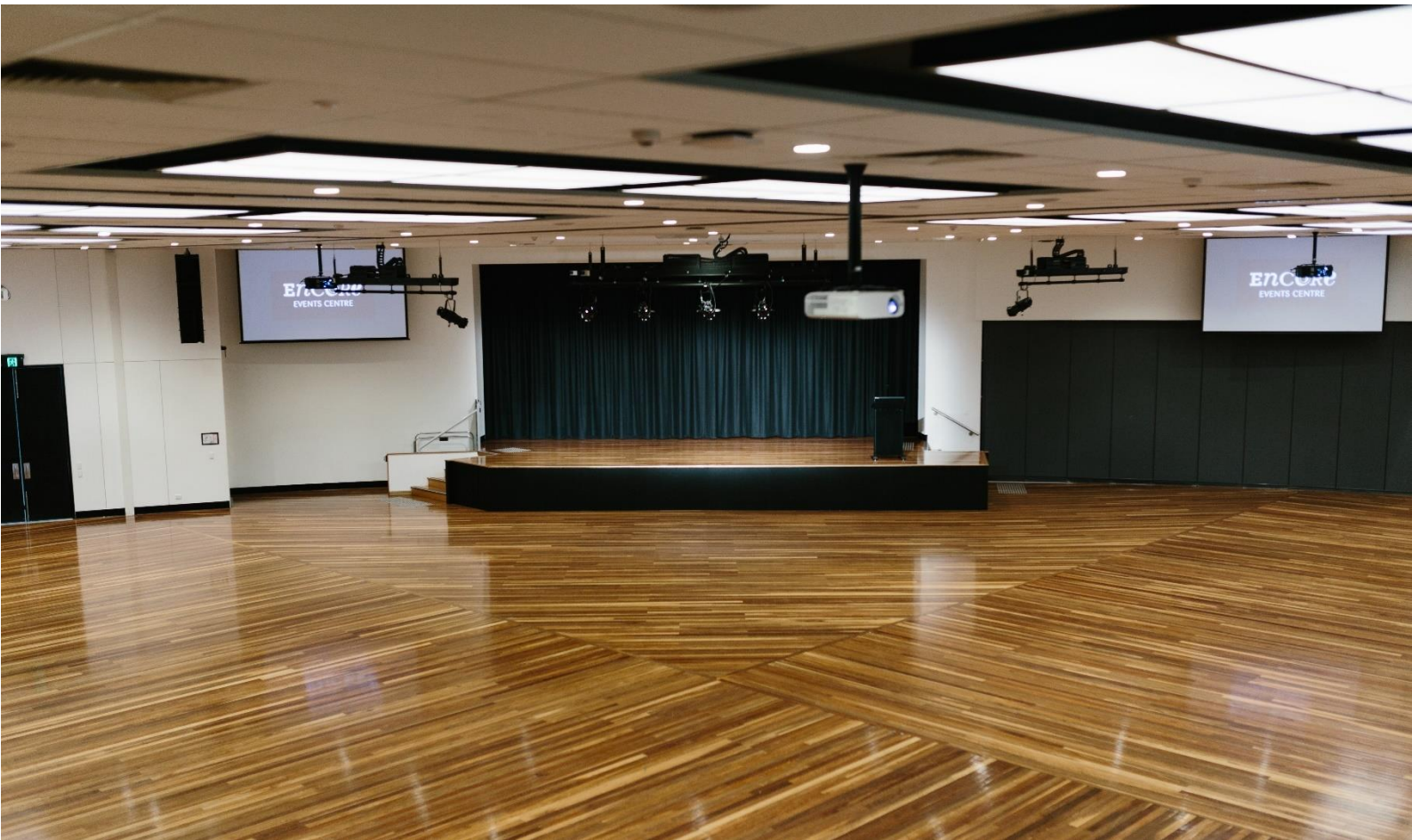


ENCORE

EVENTS CENTRE

TECHNICAL SPECIFICATIONS

80 Derrimut Road
Hoppers Crossing VIC 3029



Venue Overview

Encore Events Centre offers versatile spaces accommodating between 5 and 1,000 people making it an ideal venue for meetings, concerts, banquets, ceremonies, and performances. The venue features three main bookable areas; the auditorium, function rooms and meeting rooms.

Please contact the Cultural Venues Technical Team to discuss your technical requirements prior to your event:
venuetech@wyndham.vic.gov.au

Contents

General Information	3
Audience/Guest Entrance	3
Cast and Crew Entrance	3
Loading Dock	3
Rooms & Capacities	3
Technical Information	4
Auditorium Technical Overview	4
Stage	4
Stage Dimensions	4
Surface	4
Stage Loading	4
Auditorium Floor Loading	5
Elevated Working Platform	5
Backstage Facilities	5
Control Room	5
Audio Specifics	5
Audio Visual Specifics	6
Lighting Specifics	6
Overhead Bars	6
Function Room 1, 2 & 3 Technical Information	7
Audio	7
Audio Visual	7
Meeting Room 1,2 & 3	7
Audio	7
Audio Visual	7
Additional Information	8
Accessibility	8
Equipment brought in by Client	8
Venue OHS	8
Radio Frequency Devices	8
Venue Event Variations	8
Venue Equipment	9
Wi-Fi	9
Appendix A: Venue Map	10
Appendix B: Power Point Locations & Measurements	11
Appendix C: Standard Lighting States	12
Appendix D: Standard Lighting DWG	13

General Information

Audience/Guest Entrance Front entrance access via the main norther entrance car park.
Rear entrance access can be arranged via the southern entrance car park.

Cast and Crew Entrance Access can be arranged via southern entrance or loading dock.

Loading Dock Located via the slip driveway off Derrimut Road, the loading dock is 1500mm high and loads directly onto the auditorium stage.

Please note: there is no ramp access to stage from either the loading dock or auditorium.



Rooms & Capacities

The auditorium features a stage, which requires all operable walls of the function rooms to be opened. It is equipped with two projectors (positioned on either side of the stage), three additional projectors located around the room, stage lighting and a room PA.

Function Rooms 1, 2 and 3 are created by closing sections of the operable walls in the auditorium. These rooms can be used individually or combined in various configurations to suit different event needs. Each function room is equipped with a projector and drop-down screen, microphone and HDMI inputs, and easy access to power.

Meeting Rooms 1, 2 and 3 are located adjacent to the foyer. When all operable walls are open, they form one long room. They can also be separated into three distinct spaces or combined as needed. Meeting Rooms 1 and 3 are equipped with a projector and drop-down screens, and microphone inputs.

Room Set ups & Capacities:

Room	Banquet	Theatre Style	Cabaret	Cocktail	Area (sqm)
Auditorium	500	830	400	800	827
Function Room 1	60	68	24	80	103
Function Room 2	60	68	24	80	104
Function Room 3	60	102	48	100	117
Combined Function Rooms 1, 2, 3	200	289	144	300	324
Meeting Room 1	x	30	24	40	45
Meeting Room 2	x	30	24	40	39
Meeting Room 3	x	30	24	40	42
Combined Meeting Rooms 1, 2, 3	100	104	80	120	126
Foyer	x	x	x	300	362

All capacities are a guide only. Individual capacities may vary based on event requirements. Please note the function rooms are a part of the auditorium. Maximum capacity for the entire venue is 1,000 pax.

Technical Information

Auditorium Technical Overview

Sound System: The auditorium has a JBL VRX Line Array speaker system set up in a left/right configuration. Each side includes two subwoofers at the top for enhanced bass.

Microphones: The venue has four wireless handheld microphones, two wireless lapel microphones, and a range of wired microphones. Additional foldback speakers are available upon request.

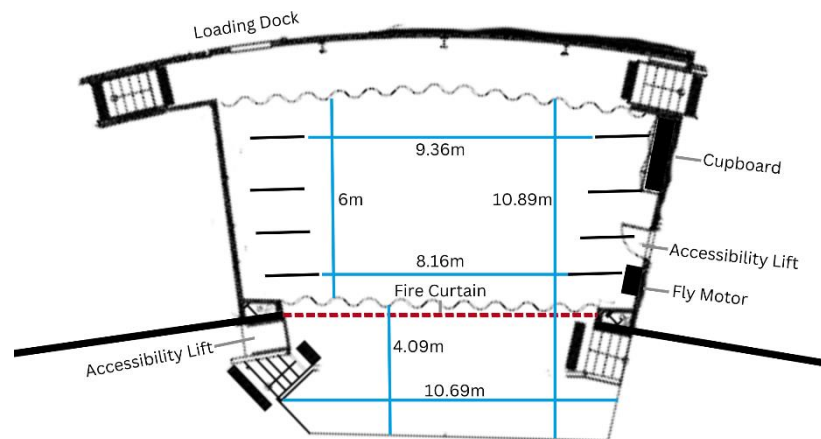
Projectors: There are five Panasonic projectors. Two projectors are positioned on either side of the stage, and the remaining three are located around the auditorium. Each projector can show different content, or the same content, simultaneously. HDMI ports are available at the front of the stage.

Please note on-stage and/or rear projection are not available.

Stage Lighting: The venue has basic stage lighting as standard. There are four front of house lighting bars with wash lighting to cover the stage, and some LEDs for basic colour effects. There is currently minimal overhead lighting on stage.

For any custom requests or changes to the standard set up, please contact venuetech@wyndham.vic.gov.au

Stage



The fire curtain line must be always kept clear, and no cables can be run across this line.

Stage Dimensions

Depth: 10.89m - from rear curtain to front edge of stage
Width: 10.69m - from the widest points of the thrust stage
Height: 900mm - the auditorium floor to the stage
Height: 4040mm - the stage to the proscenium arch
Height: 3500mm - the stage to the borders

Surface

Polished hardwood. Screwing into the surface is not permitted.

Stage Loading

400 kg/m² Uniformly Distributed Load (Static)

Heavy items must be evenly distributed across the stage surface to prevent excessive point loading. Equipment with small contact points should use load-spreading plates or platforms where necessary. Rolling loads must be assessed for potential impact on timber surfaces. All heavy items, high impact activities and/or dynamic loads must be discussed with the venue's technical team prior to site access.

Auditorium Floor Loading	400kg/m2 Uniformly Distributed Load (Static) As with stage loading, heavy items must be evenly distributed to prevent excessive point loads. Load-spreading measures should be used for equipment with small or concentrate contact points. Any activities involving high-impact or dynamic loads must be discussed with the venue's technical team prior to setup.
Elevated Working Platform	Genie AWP30S – vertical lift (with outriggers) 11m – maximum working height EWP cannot be used onstage Restrictions: The operator must hold an EWP, Yellow Card or High-Risk Work License for lifters up to 11m. A copy of the license must be provided to the venue prior to use, and the EWP JSA and EWP logbook must be signed before operation.
Backstage Facilities	Green Room: 18 pax. Equipped with make-up mirrors, hanging space, a monitor for stage feed, fridge and microwave. Dressing Room 2: 16 pax. Includes make-up mirrors and hanging space. Dressing Room 3: 20 pax. Includes make-up mirrors and hanging space. Please note there are no laundry facilities onsite.
Control Room	Access is via a ladder stairwell. The control room is positioned at the rear of the room, elevated above the auditorium floor level. Due to space limitations, only one client technical staff member may accompany venue staff in the control room.

Audio Specifics

Console	Allen & Heath QU-24 24 Mono Inputs, 3 Stereo Inputs 4 Mono Outputs, 5 Stereo Outputs plus LR
System Processing	QSC Q-SYS Core 510i
Dynamics & Effects	4 x Stereo Rack Effects
Speakers	JBL VRX rigged line array in left/right configuration 3 x VRX928LA per side Main 2 x VRX918S per side Subs 2 x JBL (BINS) Foldback 2 x JBL (Wedges)
Amplifiers	2 x Lab Gruppen PLM 5K44 Main 1 x Lab Gruppen PLM 8K44 Subs
Microphones	4 x Shure Beta 58A Wireless Vocal Microphone 4 x Sennheiser e835 Corded Vocal Mic 2 x Shure ULXD1 Wireless Lapel 4 x Shure SM57 Corded Instrument Mic 3 x Rode NGT1 Shotgun Mic 1 x Shure PGA DRUMKIT7 Drum Mic Kit
Microphone Stands	7 x K&M Boom Tall Stands 4 x K&M Boom Short Stands 5 x ADJ DS 7200B Desk Stand 3 x Tall Round Base Stands

DIs	3 x Klark Technic Stereo DI (Active) 2 x Klark Technic Mono DI (Active) 2 x Radial Pro DI (Passive) 6 x Behringer Ultra – Mono DI (Active)
Multicore	12 x XLR patch points on each P and OP, inside wall of Pros 2 x XLR patch points on P, C and OP, on DS apron
Talkback (Comms)	NIL

Audio Visual Specifics

Projector	2 x Panasonic DW11k WXGA – 11,000 Lumens Projectors are permanently installed on ceiling brackets on either side of the stage. The projectors in the auditorium can be linked with the projectors in Function Room 1, 2 & 3. Please note the venue does not offer onstage or rear projection
Screens	2 x Motorised Screens Permanently installed in the ceiling, located on either side of the stage
Playback	HDMI / USB-C
Input Locations	3 x floor traps along the front of the stage 3 x wall units along rear wall of auditorium Control Room
Camera	Lumens VC200 – mounted on rear wall of auditorium and focused on the stage. Suitable for backstage feed to green room, visual only (no audio).

Lighting Specifics

Console	ETCnomand Puck (with Controller) / ETC Colorsource 40 AV Located in the Control Room
Dimmers	3 x LSC Gen VI 12 channel dimmer/power units
Data Distribution	DMX 512 System Note: Onstage LEDs are distributed through the Art-Net Network
Lamps	20 x Strand SL15/32 4 x 1200w Cantata Fresnels 18 x Chauvet Slim Par Pro H 4 x 1250w 4 Colour Cyc Light 8 x Star – Colour 360 Wash (Up Lights)

Overhead Bars

FOH Lighting Bars (Motorised Lines)	4 x Electric Winch Bars 250kg SWL evenly distributed Each bar includes 6 patch points, and DMX patching
Onstage Lighting / Scenery Bars (Motorised Lines)	5 x Electric Pile Wind Hoists 350kg Maximum WLL 70kg/m Maximum WLL (per meter) Line 1: Lighting Bar – downstage Line 2: Scenery Bar – midstage Line 3: Scenery Bar – mid upstage

Line 4: Lighting Bar – upstage
Line 5: White cyclorama – upstage (flown action)

Drapes	Black drapes are positioned downstage, and upstage. Both are operable via hand pulley on stage left, French action.
Rigging	No rigging accessories available in the venue

Function Room 1, 2 & 3 Technical Information

Function Rooms 1, 2 and 3 are formed by closing sections of the operable walls in the auditorium. Each room can be used individually or combined in various configurations to accommodate different event needs. Each Function Room is equipped with a projector, drop down screen, HDMI inputs and easy access to power. Additionally, three microphones are available for shared use across the rooms

Audio

System Processing	QSC Q-SYS Core 510i	
Microphones	3 x Shure SM86	Wireless Vocal Mic

Audio Visual

Projectors	3 x Panasonic VZ570 WUXGA Projectors are permanently installed on ceiling brackets in Function Room 1, 2, & 3
Screens	3 x Motorised Screens Permanently installed and lower from the ceiling
Playback	HDMI / USB-C

Meeting Room 1,2 & 3

Located adjacent to the foyer, Meeting Rooms 1, 2, and 3 can be opened up to form a single long room or separated by operable walls into three distinct rooms or various combinations. Meeting Rooms 1 and 3 are each equipped with a projector and drop-down screens. There are two microphones available, shared between the meeting rooms.

Audio

System Processing	QSC Q-SYS Core 510i	
Microphones	2 x Shure SM86	Wireless Vocal Mic

Audio Visual

Projectors	2 x Panasonic VZ570 WUXGA Projectors are permanently installed on ceiling brackets in Meeting Room 1 & 3. There is no projector in Meeting Room 2.
Screens	2 x Motorised Screens Permanently installed and lower from the ceiling in Meeting Rooms 1 & 3 only.
Playback	HDMI / USB-C

Additional Information

Accessibility

Accessible car spaces are available on both the northern and southern sides of the building. Encore Events Centre offers two hearing loops:

- **Meeting Room Loop:** Available via the 'T' coil mode on the hearing aid
- **Function Rooms/Auditorium Loop:** Accessible via portable packs available at the concierge desk.

There are two wheelchair lifts to the stage – one from the auditorium and another from backstage. Accessible bathrooms are also located within the facility.

Equipment brought in by Client

It is the client's responsibility to ensure that all equipment brought into the venue is in working order (including current test tag) and compatible with systems used at Encore Events Centre. All intended use of additional equipment must be discussed with a Venue Technician prior to the event.

Venue OHS

- Limited access is permitted while any overhead winches are being loaded/unloaded
- Only a trained Venue Technician can operate winches
- Please be aware of auditorium stage edge, lift and stairways when moving down stage
- No smoking or vaping is permitted inside the venue, or within 5 metres of any entrance
- No tape is to be used without permission from a Venue Technician/Supervisor
- Please do not touch the cyclorama; any damages will incur charges
- Move safely throughout darker areas during events/performances
- A job safety analysis and/or risk assessment may be requested
- All electrical equipment must have a current test and tag certification in accordance with Australian Standard AS 3760. Equipment without a current tag must not be used
- Encore Event Centre reserves the right to refuse any hazardous or high-risk activities from taking place within the venue.

Stage Banners

Any banners hung over the stage must have steel eyelets at the top and should be attached to the bar using cable ties or suitable cloth-based rope. Banners must not exceed 10m wide x 4.5m high. Other items must be hung using rated steel wire ropes and shackles.

A venue technician must be present whenever items are being hung. The client must assist the technician during this process, to please allow adequate time.

All items must be fire retardant, and proof of compliance must be provided to the venue. The venue technician has the discretion to refuse hanging any items that may pose a risk or injury.

Radio Frequency Devices

All radio transmission devices must comply with Australian standards and operate within legal frequency ranges. Please provide the frequency ranges of any equipment to ensure they do not interfere with existing radio communications already in use at the venue, as these takes priority.

Venue Event Variations

Any subsequent technical changes to resources or staffing may incur additional charges. A variation form will need to be signed and charges will be invoiced after the booking. Additional charges may apply if the event schedule overruns.

Encore Events Centre reserves the right to enforce minimum staffing levels based on technical requirements. Additional venue staff may be necessary to ensure activities are conducted safely, and any additional staff will be at the hirer's expense.

Venue Equipment

The venue reserves the right to change, substitute, or remove any items of equipment at any time. Specific equipment may not always be available at the time of hire, and while every effort will be made to substitute equipment with a suitable replacement, this cannot be guaranteed. Hirers using venue equipment may be held liable for any loss, damage, or breakage that occurs during their hire period.

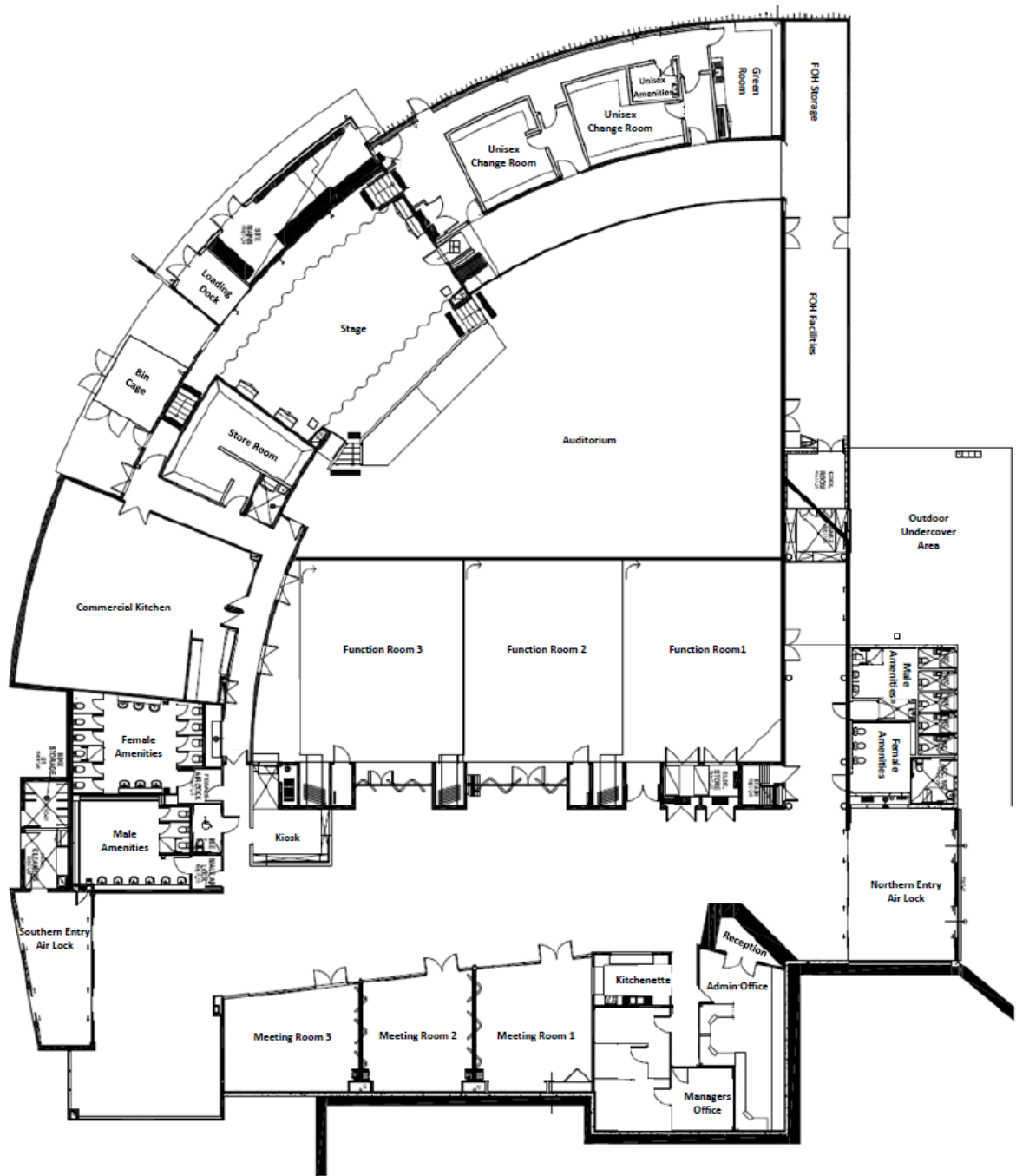
Wi-Fi

Encore provides free access to Wyndham City Council public Wi-Fi. A 5GHz Wi-Fi-compatible device is required to connect; devices that are not compatible with 5GHz Wi-Fi will not be able to access our network.

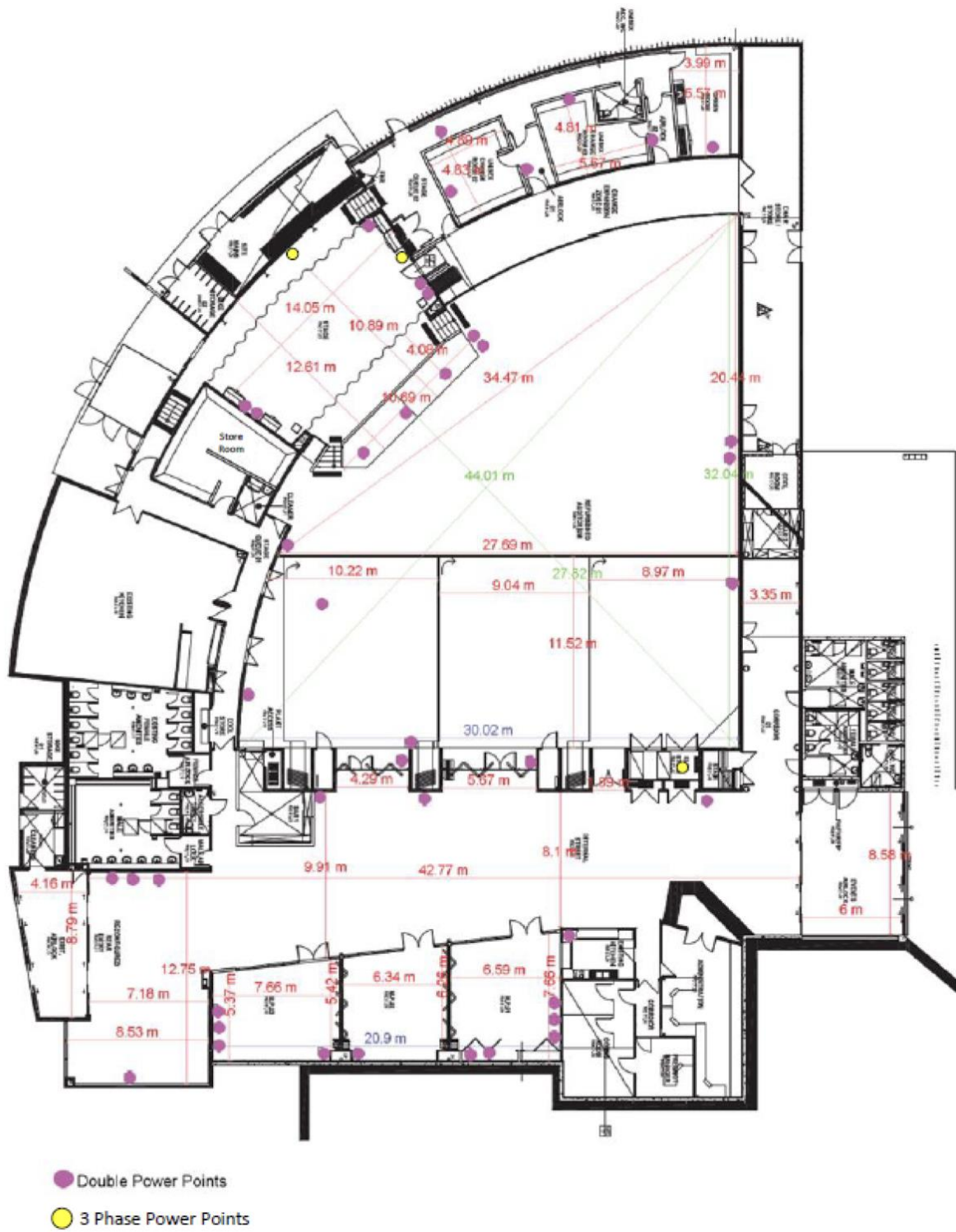
Please note:

- The public Wi-Fi will time out after 4 hours, requiring reconnection.
- The performance and stability of the network cannot be guaranteed. If Wi-Fi is critical to the success of your event, we recommend providing your own internet connection.

Appendix A: Venue Map



Appendix B: Power Point Locations & Measurements



Appendix C: Standard Lighting States



Fresnel wash (FOH)



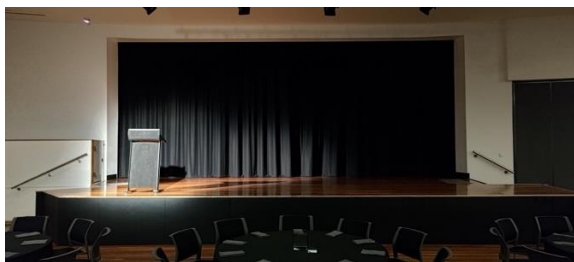
Fresnel wash (Full Stage)



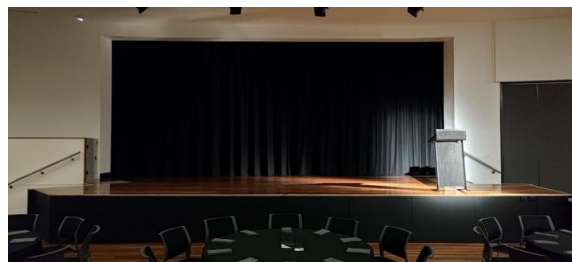
Decal Wash



LED wash (FOH)



OP Lectern



PS Lectern



LED Red



LED Green



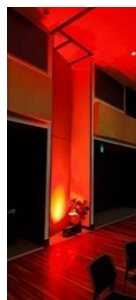
LED Blue



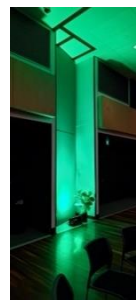
LED Yellow



White up light



Red up light



Green up light



Blue up light

Appendix D: Standard Lighting DWG

